



Mobile Media Solutions

Actualizari PXA-H800 V1.003



ALPINE ELECTRONICS GmbH

Wilhelm-Wagenfeld-Straße 1-3,
80807 München, Germany
Phone 089-32 42 640

ALPINE ELECTRONICS OF U.K., LTD.

Alpine House
Fletchamstead Highway, Coventry CV4 9TW, U.K.
Phone 0870-33 33 763

ALPINE ELECTRONICS FRANCE S.A.R.L.

(RCS PONTOISE B 338 101 280)
98, Rue de la Belle Etoile, Z.I. Paris Nord II,
B.P. 50016, 95945 Roissy Charles De Gaulle
Cedex, France
Phone 01-48638989

ALPINE ITALIA S.p.A.

Viale C. Colombo 8, 20090 Trezzano
Sul Naviglio (MI), Italy
Phone 02-484781

ALPINE ELECTRONICS DE ESPAÑA, S.A.

Portal de Gamarra 36, Pabellón, Pabellón, 32
01013 Vitoria (Alava)-APDO 133, Spain
Phone 945-283588

Introducere

Acest ghid descrie procedura de actualizare a software-ului PXA-H800.

Avertizare



Inainte de a incepe aceasta actualizare va rugam sa va asigurati ca aveti toate setarile de sunet memorate . Toate setarile vor fi pierdute in timpul acestei actualizari.

Cerinte

- Conectare la internet de mare viteza.

Instructiuni de actualizare

1. Descarcati fisierul de actualizare (.zip)
2. Extrageți fisierul descarcat pe desktop-ul dumneavoastra.
3. Conectati PXA-H800 la calculatorul dvs. si porniti software-ul Sound Manager.
4. Selectati Option / Software download.

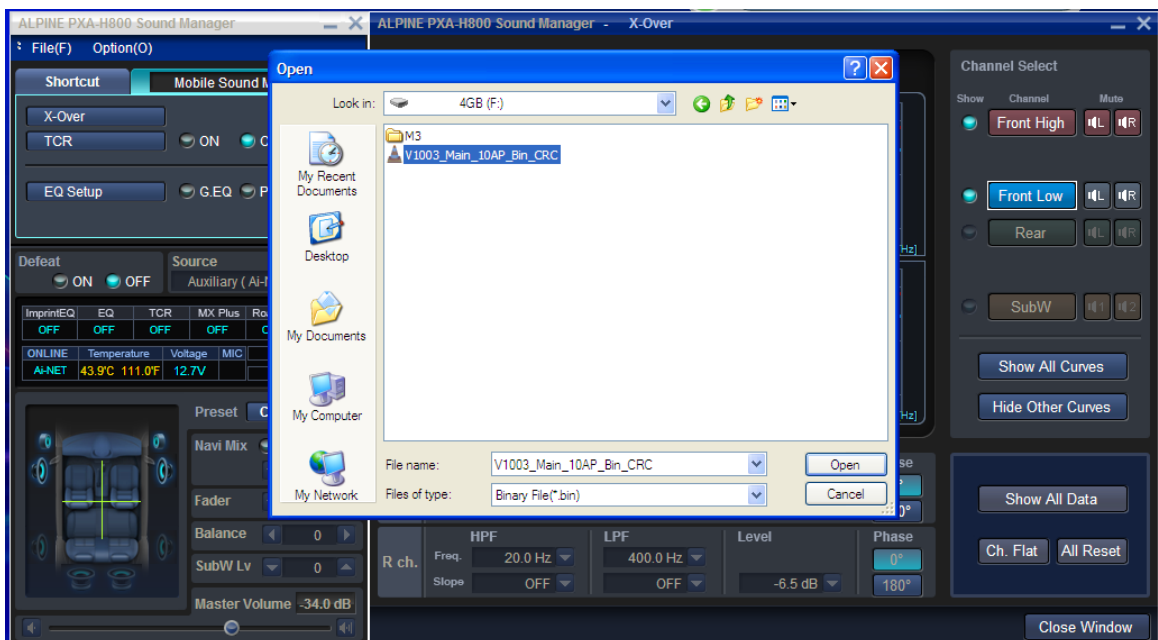
The screenshot displays the ALPINE PXA-H800 Sound Manager software interface. The main window is titled "ALPINE PXA-H800 Sound Manager - X-Over". The interface is divided into several sections:

- Left Panel:** Contains a menu with "Option(O)" selected, showing "Version Information (V) Ctrl + V" and "Software Download (D) Ctrl + D". Below this are controls for "X-Over", "TCR" (ON/OFF), and "EQ Setup" (G.EQ, P.EQ, OFF).
- Middle Panel:** Displays two frequency response graphs for "Front Low" and "Rear" channels. Both graphs show a roll-off starting at 100 Hz. The y-axis is labeled [dB] and ranges from -24 to 0. The x-axis is labeled [Hz] and ranges from 100 to 10k.
- Right Panel:** Features "Channel Select" buttons for "Front High", "Front Low", "Rear", and "SubW". There are also "Show All Curves", "Hide Other Curves", "Show All Data", "Ch. Flat", and "All Reset" buttons.
- Bottom Panel:** Contains controls for "HPF" and "LPF" for both "L ch." and "R ch.". Settings include "Freq." (20.0 Hz), "Slope" (OFF), "LPF" (400.0 Hz), "Level" (-6.5 dB), and "Phase" (0°/180°).

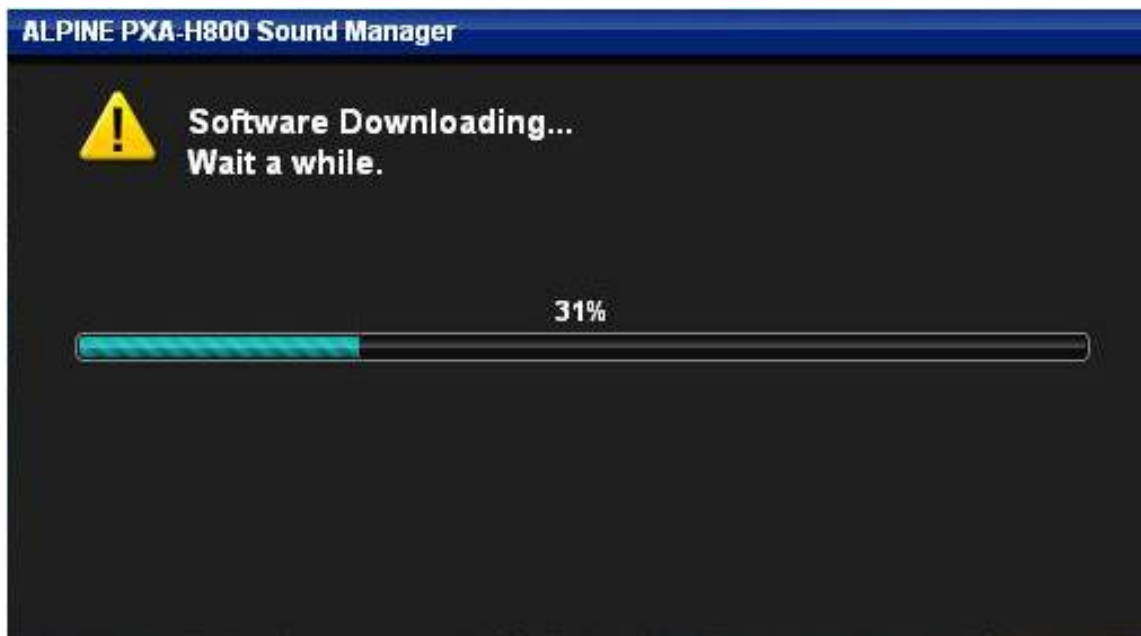
5. Selectati OK.



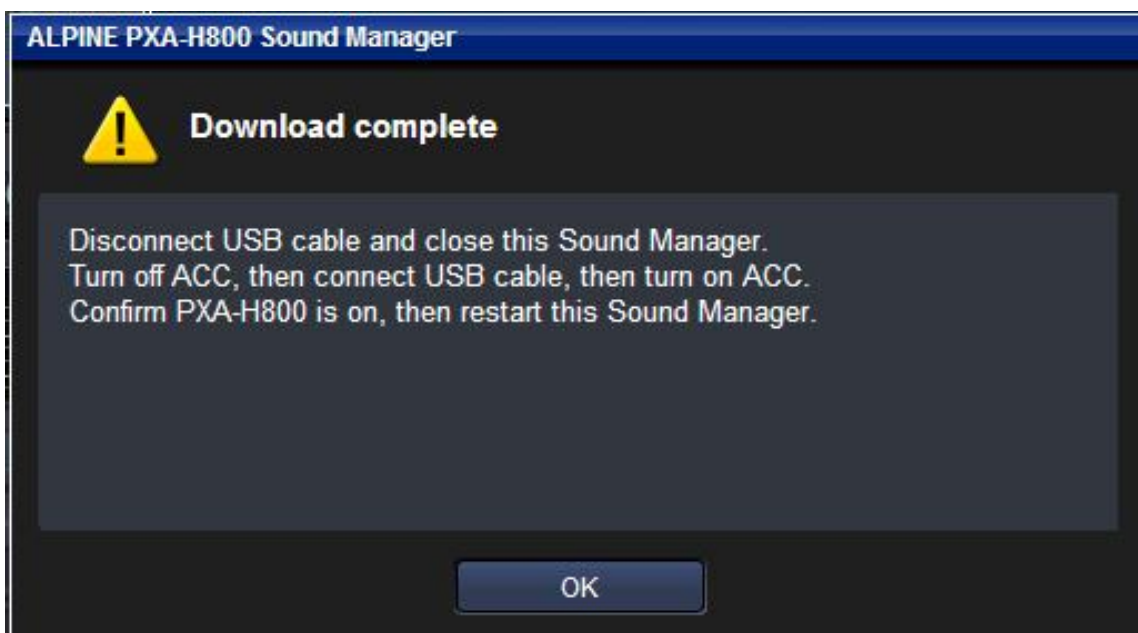
6. Selectati fisierele extrase . Numele fisierului va fi “V1003_Main_10AP_Bin_CRC.bin” apoi apasati Open.



7. Apasati OK, apoi actualizarea va incepe . Procesul va dura aproximativ 10 minute .



8. O data ce actualizarea este completa urmati instructiunile de pe ecran.



9. Atunci când reporniti software-ul Sound Manager asigurati-va că PXA-H800 a schimbat versiunea în V1.003.

10. Actualizarea dumneavoastra este completa.